

! READ
BEFORE USE



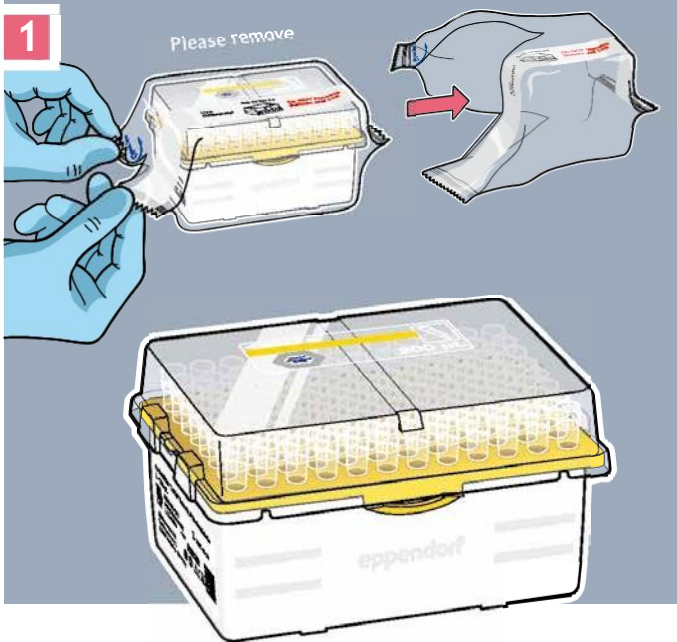
Quick Start Guide

How to refill the epT.I.P.S.® Box 2.0 with the new Sterile Reloads with bio-based pipette tips

Sustainable sterile pipette tips in sustainable Reloads

New! epT.I.P.S.® pipette tips and ep Dualfilter T.I.P.S.® filter pipette tips - now made of renewable-based feedstock packed in a new reload variant for sterile pipette tips - the perfect fit into our new multifunction Box 2.0, available in 3 sizes.

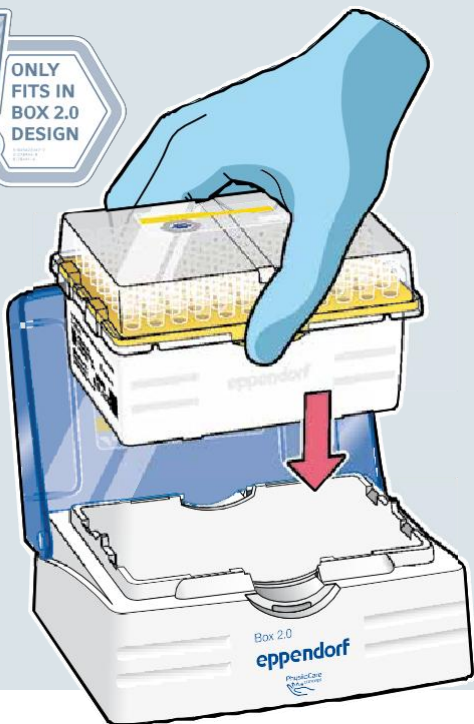
Sterile Reloads for epT.I.P.S.® BioBased and ep Dualfilter T.I.P.S.® BioBased are available in volumes up to 1,250 µL L. Learn here how to transfer the pre-sterilized Reloads safely into the Box 2.0.



Step 1: Open the foil at the blue arrow.

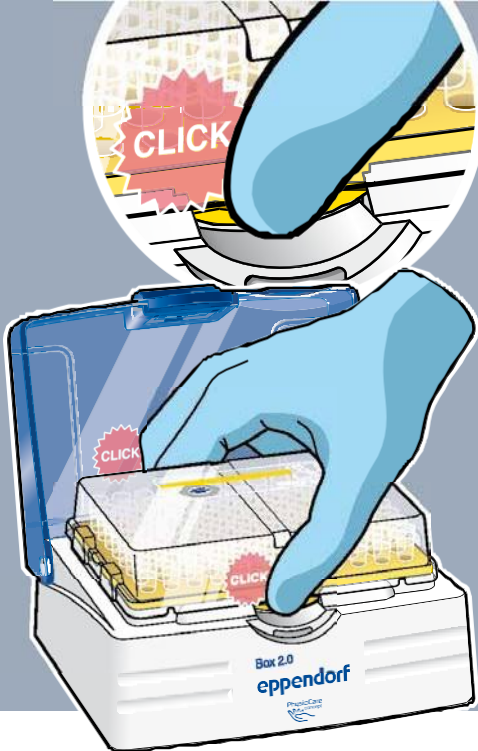
2

ONLY
FITS IN
BOX 2.0
DESIGN



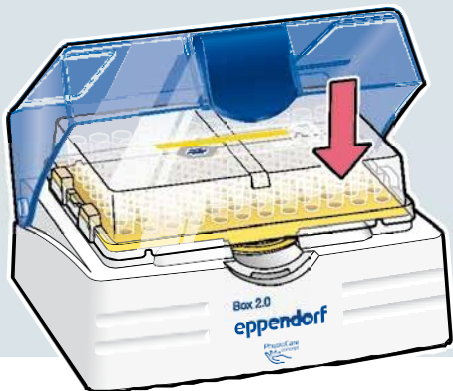
Step 2: Do not remove the lid or the bottom part!
Hold the closed Reload on both sides and place
it vertically into the Box.

3



Step 3: When inserting the Reload into the Box, press lightly on the two protrusions on the tray sides. Make sure all sides click in.

4

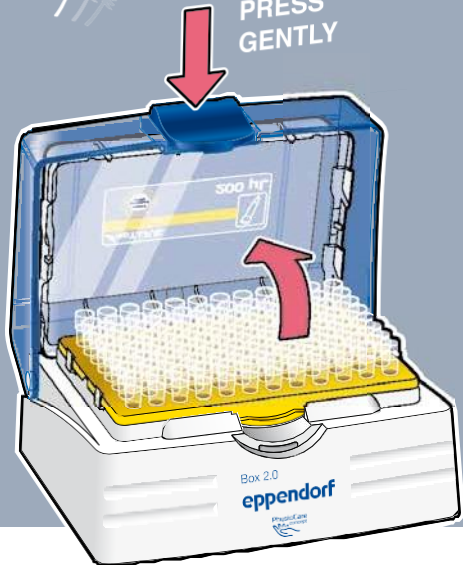


Step 4: Do not remove the lid of the Reload!
Firmly close the Box lid over the Reload lid to ensure the TwinLid® function.

5



PRESS
GENTLY

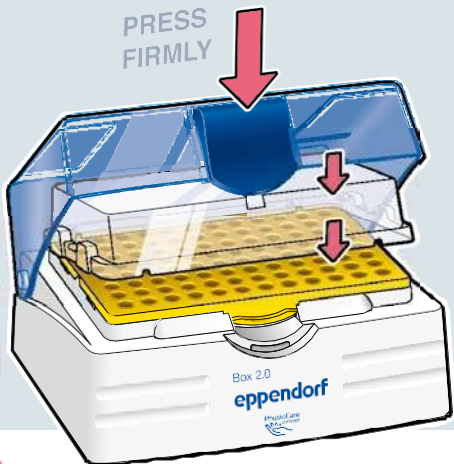


Step 5: To access tips, open the Box lid by gently pressing the blue light touch button. The TwinLid® function ensures that the lid of the Reload will stay within the lid of the Box.

6

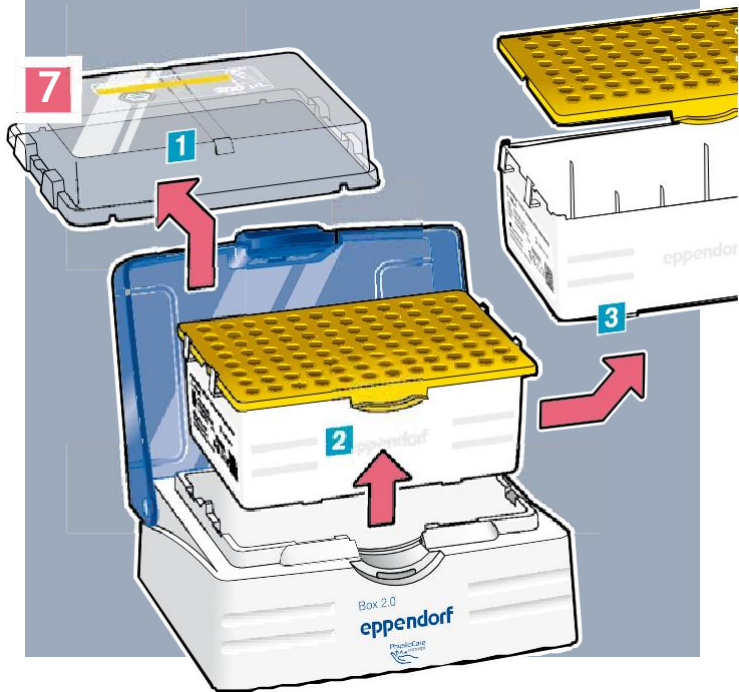


PRESS
FIRMLY



max.
45°

Step 6: To remove an empty Reload, place the lid into a half-open position ($\sim 45^\circ$) and press the blue button firmly. The Reload lid falls off.



Step 7: Remove the lid **1**, then remove the tray and bottom part from the Box **2**. Separate the tray from the bottom part **3** for better stackability and to reduce your waste volume.

